

Leading Australian manufacturer of premium quality panels for the Construction Industry



Project: SCEGGS Redlands, Sydney
Construction: STRUCTUS
Product: VITRA PANEL®

Vitragroup was established over 20 years ago as a coating specialist and manufacturer of prefinished CFC panels. Our leading product is VitraPanel. We use only Australian materials and suppliers.

The focus is to work with designers, architects and builders to develop new products that comply with all regulatory requirements, as well as the aesthetic and ecological demands on modern buildings.

Products: We manufacture and supply, **VitraPanel®**, **VitraPanel® Custom Image**, **VitraSteel®** and **VitraClad®**.

Services: Contract coating of a wide range of substrates, specialised engineering services for Facades, Tunnel Lining and Noise Walls.

Working with architects from **CONCEPT-DESIGN-CONSTRUCTION**, we have been involved with some of the most recognisable projects from commercial buildings, hospitals, schools, shopping centres, public works, infrastructure and major road projects.

ALL PRODUCTS ARE AUSTRALIAN MANUFACTURED AND NON-COMBUSTIBLE

VitraPanel: A prefinished CFC Panel, extreme weather and UV resistant, unlimited colour choice, graffiti resistant, high impact resistant.

VitraPanel Custom Image: Same qualities as Vitrapanel with graphics designed by the architect printed directly on the panel. Designed for external facades, no minimum quantities, each job a unique statement reflecting the design inspired by the architect or developer.

VitraSteel: A composite light rigid steel faced panel, using prefinished BlueScope Steel, with a non-combustible engineered core, available in any colour. Custom image also available.

VitraClad: A monolithic cassette steel panel. Pre-coated BlueScope Steel available in any colour. Custom image also available.



Project: DUNCRAIG SHS
Architect: Paterson Group
Builder: Firm Construction
Artist: Eveline Kotai
Product: VITRA PANEL®
CUSTOM IMAGE



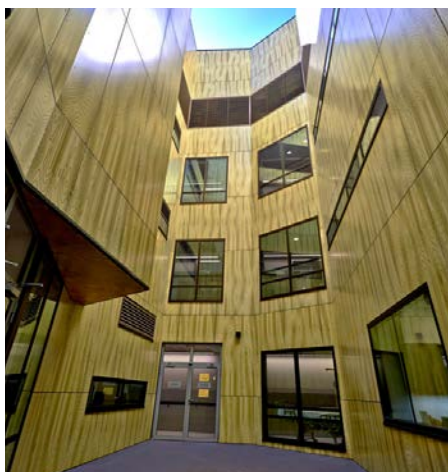
The Mackay Base hospital (commissioned by QLD health), incorporated a striking external Façade, which demanded a quality supplier who could guarantee supply and workmanship to meet project objectives. VitraGroup met all challenges and worked closely with BlueScope and the artist in delivering a satisfying result.

The hospital Façade was project managed by BlueScope; the façade panels consisted of metal cassette panels top coated in VitraPanel Fluoropolymer coating system, in a range of neutral tones.

Custom Image Metal panels were also used to express the main entrance to the Hospital. The design called "Reflections on a Blue River" was by the renowned artist Jill Chism. For more photos of this interesting project please visit <http://www.jillchism.com.au/mackay.html>.

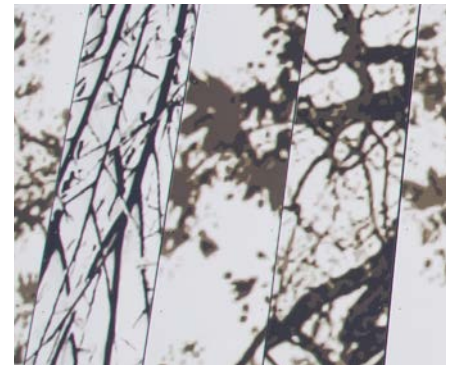
"The artwork includes single coloured panels as well as printed panels and covers over 400m² of ceiling. The concept explores the importance of the Pioneer River and Harbour in the Mackay region. The colours spilling out from the reflections onto the surrounding panels envelop the viewer as if immersed in a single body of water".

Vitragroup provided its specialised coating services to BlueScope as well the Custom Image Metal Panels.



Concept image for Frankston Hospital
- Lyons Architects

Imaginative and iconic repeated design with VitraPanel Custom Image gave this hospital a unique signature.



Durability, non combustibility, longevity easy installation and flexibility was the desired elements in choosing VitraPanel and VitraPanel Custom Image panels, the clever abstract design with reflections of trees to reflect the surrounding environment were used for this project. The images were printed on grey pebble colour specially formulated for printing to match the VitraPanel so that a uniformity in overall colour was achieved with the distinctive design.



VITR PANEL® : Hobart International Airport Terminal re-development-STAGE 1 Arrivals recently completed.

"VitraPanel is very functional and works superbly" **Misho James Vasiljevich**



Project: Mariners Tuggerah NSW
Design: Nicholas Bray Landscapes
Photography: Steven Foster
Product: VITR PANEL®
CUSTOM IMAGE

New art screens at the Central Coast Mariners Centre of Excellence.
"Bold geometric patterns that celebrate the dynamic and colourful nature of football". **Nicholas Bray Landscapes**



Project: Mt Victoria Park Tunnel,
Wellington New Zealand
Client: Memorial Park Alliance
Product: VITR PANEL® EC™

TUNNEL LINING

After the successful completion of the Terrace Tunnel refurbishment with Vitrapanel EC in Wellington NZ, VitraGroup were chosen for the refurbishment of the Mt Victoria Tunnel. VitraGroup provided engineering input in the **design** and **installation** and **supplied** all materials together with **VitraPanel EC** and **VitraPanel Custom Image** panels.

Services: Vitragroup Engineering input in design and installation



VITRAGROUP®

Architectural Panels

PUBLIC WORKS



Project: Eastern Goldfields Regional Prison, Kalgoorlie WA
Architects: Cox Howlett & Bailey Woodland
Art Coordinator: Malcolm McGregor
Product: VITRAPANEL®
 CUSTOM IMAGE

Images printed on VitraPanel Custom Image manufactured to withstand the harsh UV environment of Kalgoorlie. The artistic design acknowledges the unique identity and culture of the Goldfields and provide an inside to the Aboriginal culture of the region. The original artworks were painted by 21 artists representing the vast area of the state.

VitraPanel Custom Image provided a cost effective and long life product that was easy to install.



RESIDENTIAL

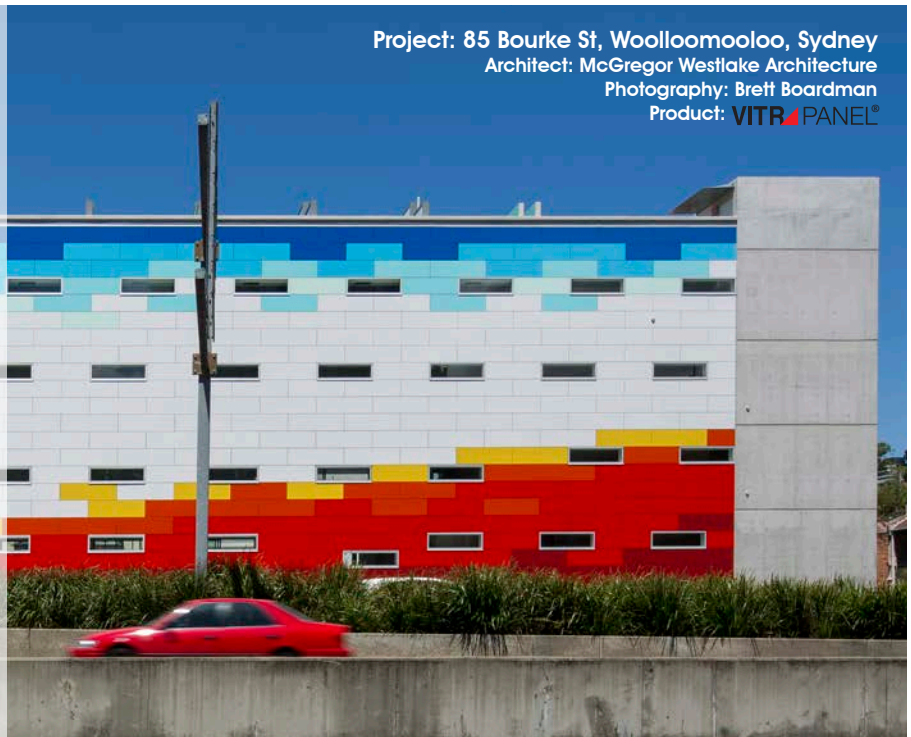
We are very proud to be associated with MWA

This project won the AIA 2016 Award for RESIDENTIAL ARCHITECTURE- MULTIPLE HOUSING

"VitraPanel was our preferred selection as a light weight panel for a number of reasons.

- It's smooth shiny factory finish acted as a visual compliment to the raw, matt finish of the off form concrete.
- There was a great flexibility in the colour choices.
- It was easy to adjust the module to suite our window module.
- It was easily installed with the "Exotec" Framing System.
- We were aware of the use of a VitraPanel product in the adjacent motorway tunnels, where it's smooth finish minimised dust and dirt accretion.
- We are very happy with how it was installed and the finished product." **Peter McGregor**
 Director MWA.

Project: 85 Bourke St, Woolloomooloo, Sydney
Architect: McGregor Westlake Architecture
Photography: Brett Boardman
Product: VITRAPANEL®





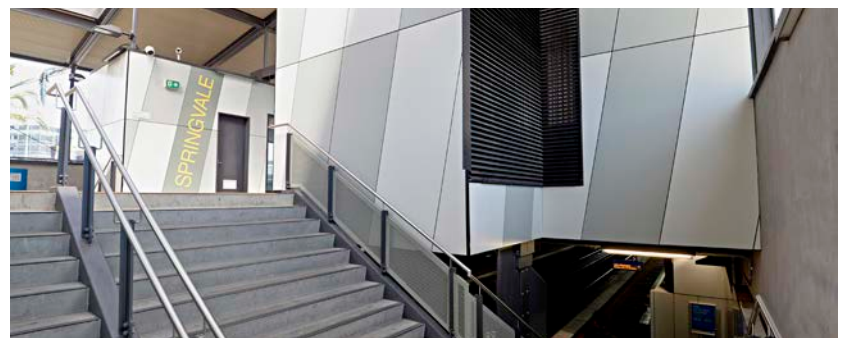
Project: SWRL, Glenfield to Leppington Rail Line
Design: KI Studio
Client: John Holland Group for Transport for NSW
Product: VITR PANEL[®] CUSTOM IMAGE



The KI Studio designed project received the following awards:

- Finalist Good Design Awards - Urban and Public Spaces
- AILA NSW Award for Design in Landscape Architecture

"The Integrated Art & Heritage Strategy is the culmination of integrating built form elements, landscape design initiatives, ecology, art, architecture and heritage into a seamless whole. The strategy conveys the history and transformation of the Western Growth Centre in a contemporary design to enhance the civic character of the station's precinct." **KI Studio**



Project: Springvale Station, Melbourne
Architect: Caldis Cook Group in conjunction with Jacksons Architects
Product: VITR PANEL[®]

"This particular station building in Springvale demonstrates how a public space can be a very important place for both the community and the town centre." **CCG Architects**